

# EVL-LED DMX Flexistrip Drivers

DATA SHEET V1/08-10

A range of dedicated DMX Drivers designed and built in the UK for use with EVL Flexistrip. These drivers will give optimum effect and output and can be used in many market applications.

The EVL **LED Flexistrip DMX Driver** represents true innovation in LED technology. Designed to optimise the performance of LED's, the driver incorporates a host of features including auto fade and static colour select. Full 0-100% dimming is achieved via an on-board DMX512 interface. Input & output power is via Molex connectors and DMX connection is via RJ45 sockets.

*Input voltage:* 12v DC from an EVL Flexidrive Power Supply Unit

*Output voltage:* 3 x 12v DC

*Data connection:* RJ45 terminal blocks

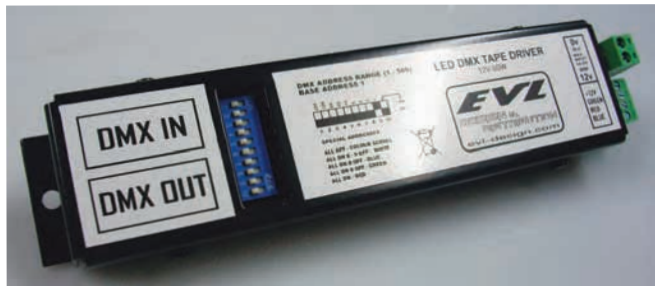
*Construction:* Painted metal

*Flammability:* 94v-0 Flame class rating

*Cooling:* Convection

*Dimensions:* 187 x 42 x 22 mm

*Weight:* 257gms



The EVL **LED Flexistrip '3in1' DMX Driver**.

Designed and manufactured here in the UK to the same specification as our 'Flexistrip DMX Driver' but with the added feature of a built in 60 watt / 5 amp Power Supply. The unit also features an intergrated power supply for the EVL LED wall plate controller.

*Input voltage:* 240V AC / 100 - 240V

*Output voltage:* 3 x 12v DC

*Data connection:* RJ45 terminal blocks

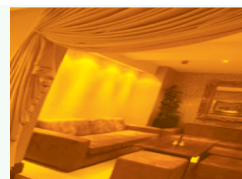
*Construction:* Painted metal

*Flammability:* 94v-0 Flame class rating

*Cooling:* Convection

*Dimensions:* 183 x 65 x 50 mm

*Weight:* 590gms



**EVL LED DESIGN / BPC CIRCUITS LTD**  
OMNI HOUSE, SHEENE ROAD  
GORSE HILL IND EST. LEICESTER LE41BF  
TEL: sales +44(0)116 2347053 / +44(0)116 2334444  
email: sales@evl-design.com  
www.evl-design.com / www.bpc-circuits.co.uk